

230-2005

## Protective Vent Plugs

PATENTED

Metric

IP68

IP69K

RoHS Compliant

B Washer (Gasket)    C Mounting Body    CA Membrane Supporter    D Washer (Gasket)    F Protective Cap



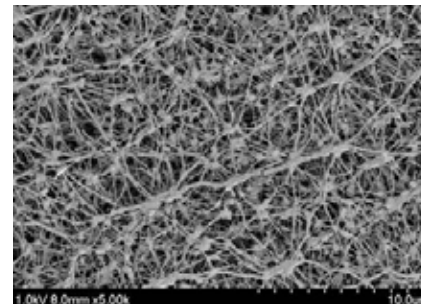
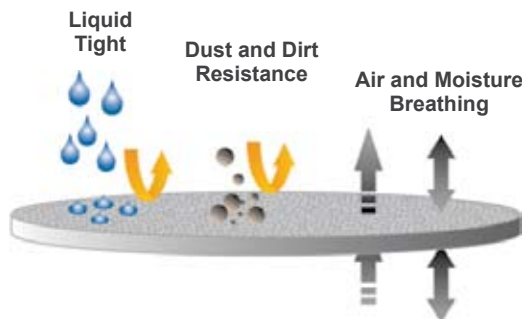
- Thread Type : Metric (Short or Long Thread Length).
- Material Data : Nylon PA 66 ( Flammability UL 94V-2 or 94V-0 ) for C,F parts. ( Contact us for UL outdoor rating (f1) PA 66 ) ePTFE / PET ( Membrane / Supporter ) for CA part. ( IP68 - Rating ) Standard in Wether Resistant rubbers for B,D parts. ( Contact us for V0 class rubbers )
- IP Protection : IP68 / IP69K.
- Airflow (dp = 70 mbar) : about 1502 ml / min ( area : 1cm<sup>2</sup> ).
- Working Temp. : - 40 °C to 105 °C ( - 40 °F to 221 °F ). Short-Term to 160 °C ( 320 °F ).
- Application : The structure of the ePTFE porous membrane is water & dust & temperature proof which is ideal for relieving air pressure & moisture caused by temperature difference between day and night. Furthermore, the membrane is protected by a small & smart designed AVC Protective Vent Plug which is weather-resistant and flame-retardant suitable for outdoor electric device application ( Telecommunication, PV or Lighting...ect ) and enable them to keep out water and dust and still allow product to breathe with outside environmental air to longer product life.

\* The Lock Nut are not included.

\* Sizes with special marks \* below are the special products which application, inventory and pricing please contact service personnel.

Thread	Cat. No.			Thread O. D. C1 mm	Panel Mounting Hole mm	Thread Length C2 mm	Wrench F mm	Std. Pkg. pcs		
	Sizes (* indicate for special products)									
		Black RAL 9005	Light Grey RAL 7035	Silver Grey RAL 7001						
Short Thread	M12 X 1.5	* VGA - M12 X 1.5 - ST	B	G	SG	12	12.2 ~ 12.4	10	16	50
		* VGA - M12 X 1.5 - ST - PAV0	B	G	SG	12	12.2 ~ 12.4	10	16	50
		* VGA - M12 X 1.5 - ST - V0	B	G	SG	12	12.2 ~ 12.4	10	16	50
		* VGA - M12 X 1.5 - ST - F1	B	G	SG	12	12.2 ~ 12.4	10	16	50
		* VGA - M12 X 1.5 - ST - V0F1	B	G	SG	12	12.2 ~ 12.4	10	16	50
Long Thread	M12 X 1.25	* VGA - M12 X 1.25	B	G	SG	12	12.2 ~ 12.4	12	16	50
		* VGA - M12 X 1.25 - PAV0	B	G	SG	12	12.2 ~ 12.4	12	16	50
		* VGA - M12 X 1.25 - V0	B	G	SG	12	12.2 ~ 12.4	12	16	50
		* VGA - M12 X 1.25 - F1	B	G	SG	12	12.2 ~ 12.4	12	16	50
		* VGA - M12 X 1.25 - V0F1	B	G	SG	12	12.2 ~ 12.4	12	16	50

### ePTFE Membrane ( IP68 - Rating )



MEMBRANE STRUCTURE : Scanning Electron Micrograph at 5,000 Magnification

